



# GAT MONTHLY MEMBERSHIP PROGRESS REPORT

Results as of: 7/31/2023

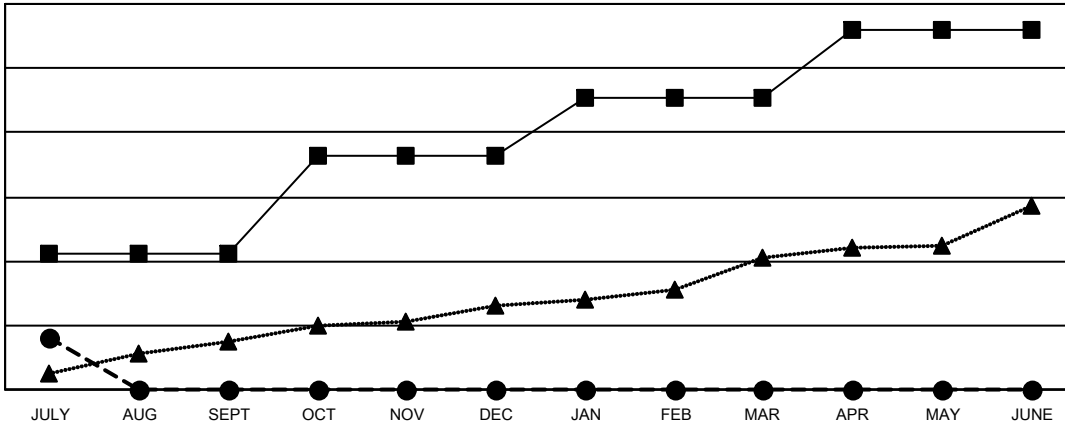
Multiple District 321

LOCATION: INDIA

Clubs			
RESULTS FOR 2023-2024			
QUARTER	NEW CLUB GOAL	NEW CLUBS	DROPPED CLUBS
JULY/AUG/SEPT	42	16	4
OCT/NOV/DEC	31	0	0
JAN/FEB/MAR	18	0	0
APR/MAY/JUNE	21	0	0

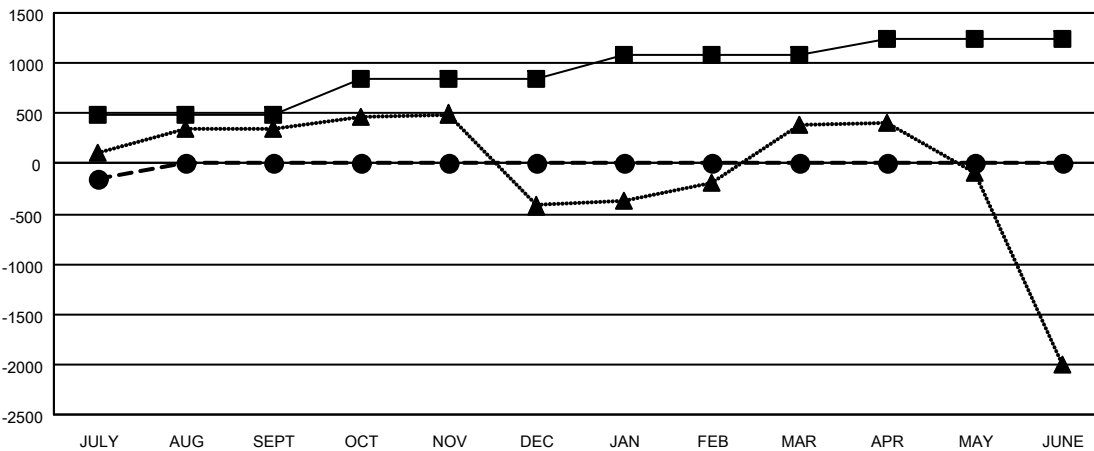
Members			
RESULTS FOR 2023-2024			
QUARTER	MEMBER GROWTH NET GOAL	MEMBER GROWTH ACTUAL	DROPPED MEMBERS ACTUAL (including transfers)
JULY/AUG/SEPT	480	1,220	1,203
OCT/NOV/DEC	370	0	0
JAN/FEB/MAR	235	0	0
APR/MAY/JUNE	165	0	0

GOALS AND ACTUAL NEW CLUBS CUMULATIVE



- - CURRENT YEAR GOALS FOR NEW CLUBS
- - CURRENT YEAR ACTUAL NEW CLUBS
- ▲ - LAST YEAR ACTUAL NEW CLUBS

GOALS AND ACTUAL MEMBERS CUMULATIVE



- - MEMBER GROWTH NET GOAL
- - MEMBER GROWTH ACTUAL
- ▲ - LAST YEAR MEMBERSHIP ACTUAL

DROPPED CLUBS: 4	
<b>DROPPED MEMBERS</b>	
DECEASED	131
CLUB CANCELLED	21
OTHER	1,051
<b>TOTAL</b>	<b>1,203</b>

194 CLUBS OF 1144 ADDED 1 OR MORE NEW MEMBERS

[CLICK HERE FOR CUMULATIVE MEMBERSHIP DATA](#)

GENDER DISTRIBUTION	
MALE	21,310 (68.79%)
FEMALE	9,655 (31.17%)
NON BINARY	0 (0.00%)
PREFER NOT TO ANSWER	13 (0.04%)
<b>TOTAL FAMILY UNIT MEMBERS</b>	<b>18,210</b>
<b>FAMILY MEMBERS PAYING HALF DUES</b>	<b>11,022</b>